

## Installing Brake Resistor To V1000 Inverter

When replacing a Yaskawa GPD305 inverter into a washer / extractor, a braking resistor will need to be installed. This is to prevent the V1000 inverter from seeing excessive voltage developed on the internal DC Bus as a motor decelerates from extract speed resulting in an oV error.

The following parts are required;

1 ea. 09MV100RES 100 ohm resistor

2 ea. 90MV10DBBK Resistor mounting brackets

1 ea. 30RA175T Thermostat opens at 175deg.

1 ea. 03 BL1X1 Mounting bracket for thermostat

Misc. hardware for attaching the resistor and thermostat mounting brackets

18awg wire to connect the thermostat

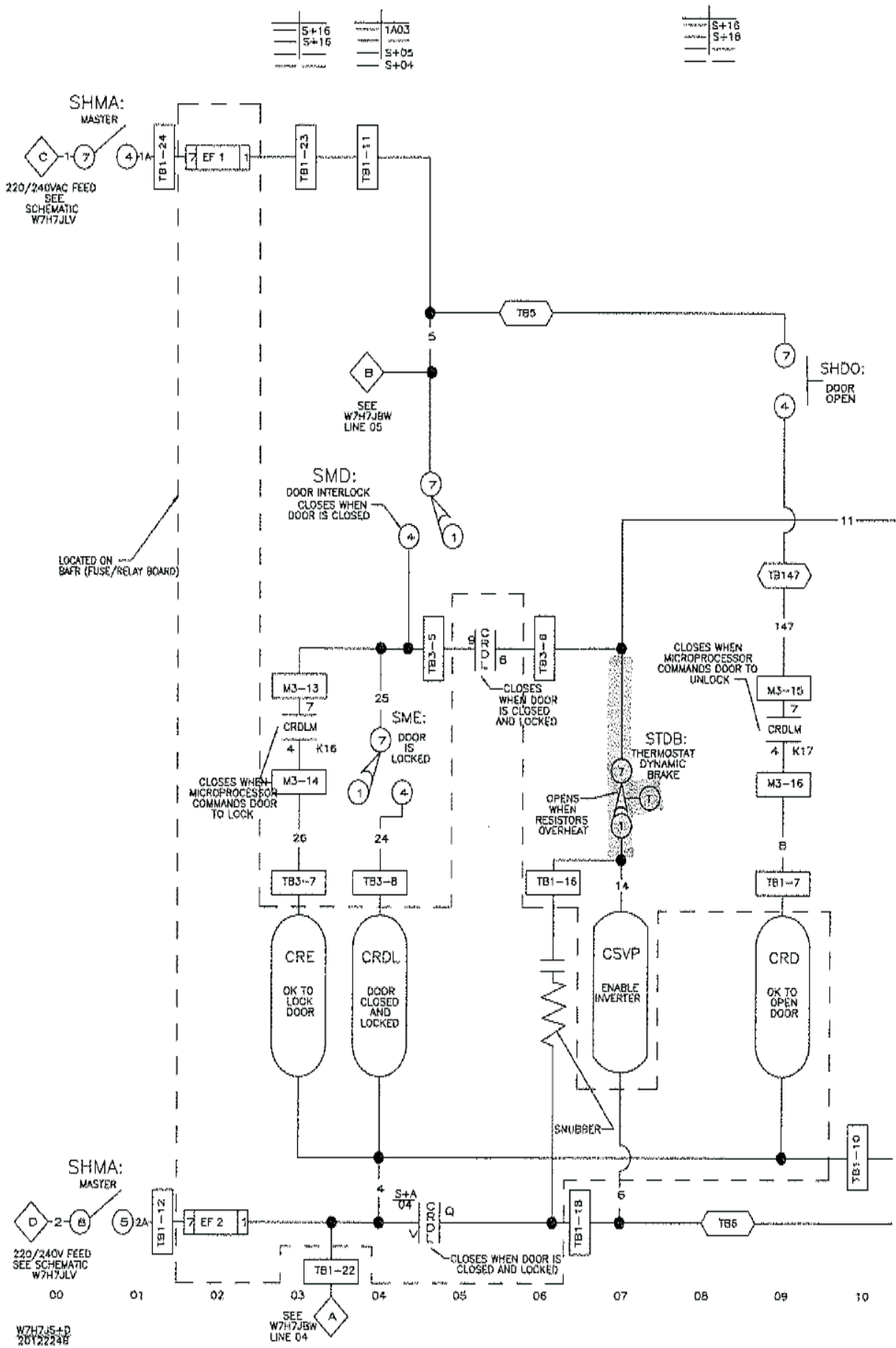
14awg wire to connect the resistor.

After installing the inverter, mount the resistor between the electrical control box, right side, between the outer console and the electrical box. The thermostat is attached to the bracket, and the bracket is mounted near the top of the resistor.

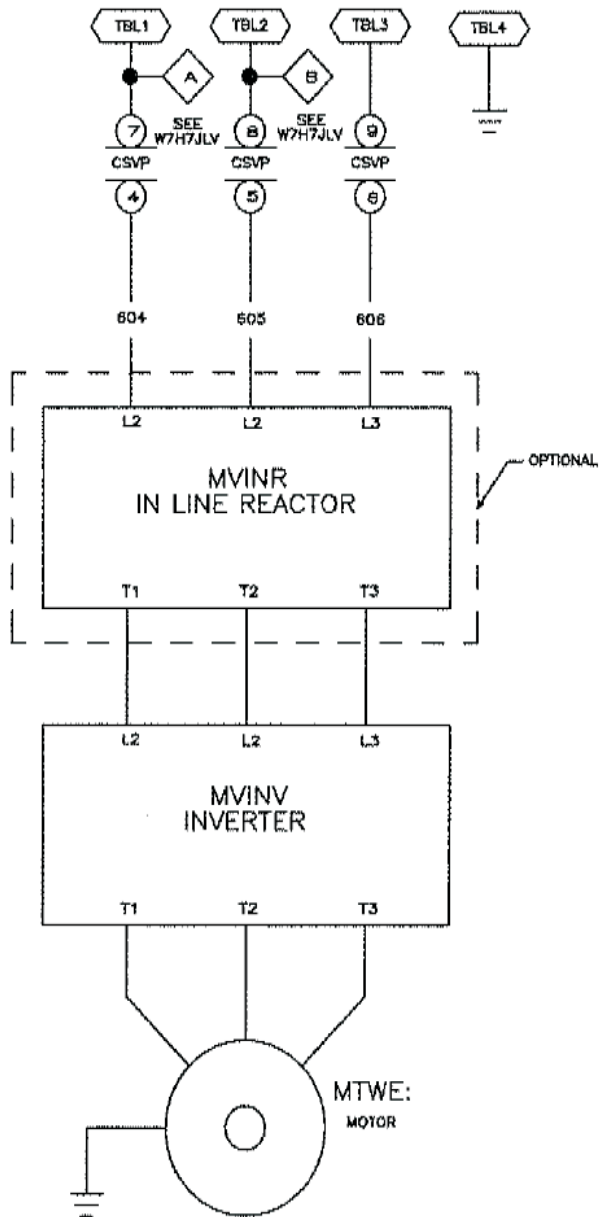
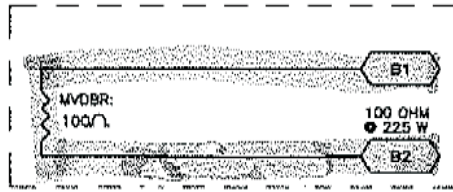
Connect the resistor to the B1 and B2 terminals of the inverter.

Connect the thermostat in series with the inverter contactor coil.

See attached schematics highlighted areas for wiring details.



W7H7J5-D  
20122248



LITHO IN U.S.A.

00 01 02 03 04 05 06 07 08 09

W2H7AFA  
2008475B

